

## Before you start

Search and download the TriplePlus APP available online or scan the QR code.



Available on the App Store

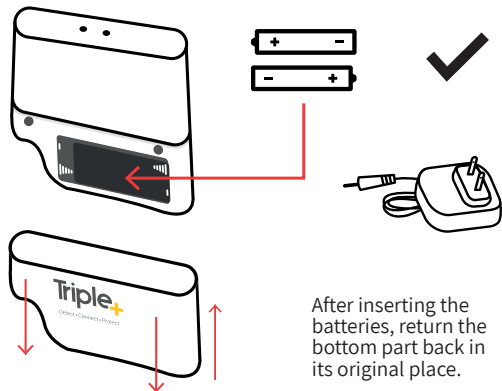


GET IT ON Google Play



Must have 2.4GHz Wi-Fi for Hub 2.0

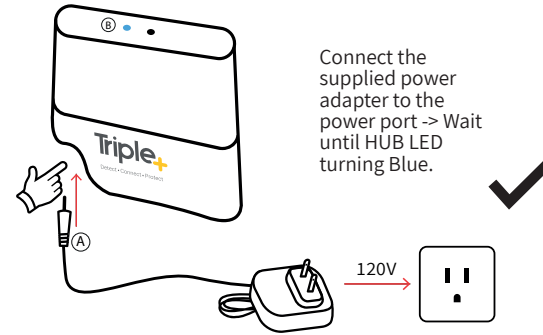
Insert the supplied 2 AA backup batteries to the HUB -> HUB LED turn Blue.



After inserting the batteries, return the bottom part back in its original place.

01

## Before you start



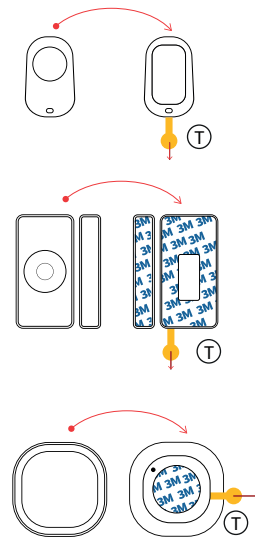
Connect the supplied power adapter to the power port -> Wait until HUB LED turning Blue.

Activate Devices

All sensors include batteries. To activate them simply remove the orange tape as shown. (T)

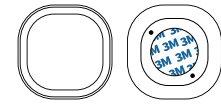


All sensors include self adhesive tape for easy installation. Remove the easy-peel cover and gently press the sensor against the surface to which it is to be installed.



02

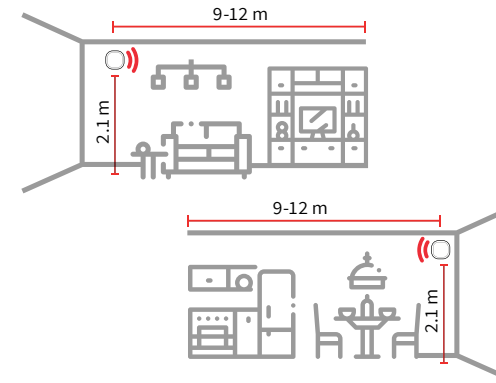
## Motion Sensor



Install height : 2.1 m  
Detecting Distance: 9-12 m

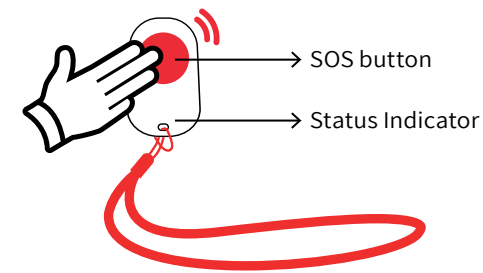
### Recommended installation locations

■ Living room ■ Dining room ■ kitchen



## Panic Button

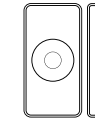
The Panic Button is designed to send an immediate alert when pressed. Anyone monitoring the system will receive notification via push to the APP, email, text or voice call.



We recommend that users wear or keep the Panic Button in close proximity at all times for ease of use.

03

## Magnetic Sensor

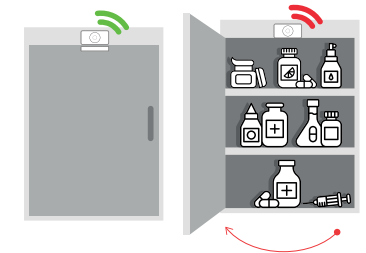


Detecting Distance: 15mm

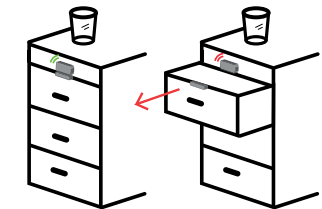
### Recommended installation locations

We recommend the use of this sensor in places where medicines are stored.

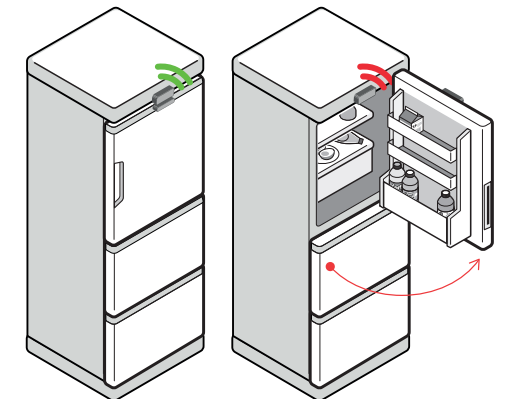
■ Medicine Cabinet



■ Drawers



■ Fridge



04

## Installation Instructions

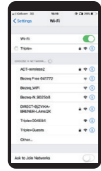
1

Download the free TriplePlus APP for your smart phone from Google Play or the AppStore. The entire installation is managed via your smartphone.



2

Make sure your phone is connected to the same Wi-Fi network that the Triple+ CLM™ HUB is to be connected to.



Note: 2.4GHz Wi-Fi network required.

3

Read the terms and conditions, scrolling all the way down, then tap "I Agree" at the bottom if you approve.



4

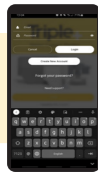
Tap the "Login" button.



Select your language.

5

Tap the "Create New Account" button.



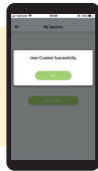
Fill out the required fields and tap the "Accept" button.



Note: Ensure the complete accuracy of the email address and password requirements before accepting.

6

Tap the "Ok" button.

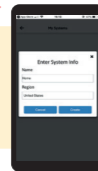


Tap the "Add System" button.

Note: If you tapped the back arrow, tap on the 3 lines on the top left corner (Main Menu) -> Settings -> Add System.

7

Name your system and choose your region, and tap "Create" button.



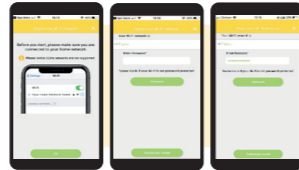
8

Follow the instructions on the APP to initiate the installation sequence. When requested to unplug the power from the HUB, please disconnect power adapter first, then remove AA batteries, and reinsert AA batteries before plugging power adapter back in, then tap the "OK" button.



9

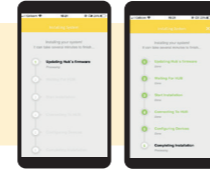
Please check to ensure that you are connected to your selected Wi-Fi network.



The field "Your Wi-Fi network is:" shows the current network to which your phone is connected to -> if this is not the required one -> open the Wi-Fi settings of your phone, connect to the correct network and open TriplePlus APP again. If the HUB can't connect to the Wi-Fi please refer to Technician Mode and follow the instructions.

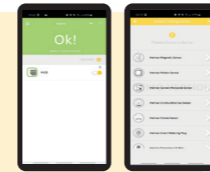
10

After the HUB connects to the Wi-Fi the installation will start automatically.



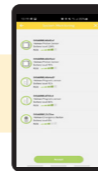
11

Tap on the "Menu", "Settings", "Add/Remove Devices" and click on "Configure", "Add Zig Bee Devices". Choose from the list the provided devices (heiman Magnetic Sensor, Heiman Notion Sensor and Heiman Emergency Button).



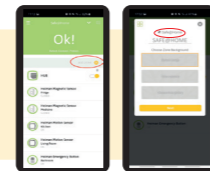
12

When all the requested devices are added, click "Accept".



13

To activate the SAFE@HOME functionality, tap on the "Add Zone +" button and choose with the "+" button which devices to be included in the SAFE@HOME zone."



Note: make sure you check mark the SAFE@HOME option.

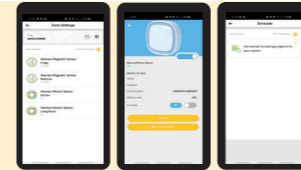
14

Select the devices to be added to the SAFE@HOME zone. Tap on "Finish" once all required devices are added to the current zone.



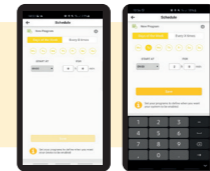
15

To start monitoring and receive notifications in case of a missing activity: Tap on a zone Tap on a device Tap on the "schedule" button Tap on "Add Program".



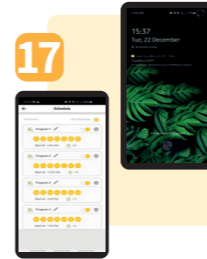
16

Define days and time when the schedule should be executed. During the selected times, the system will be "waiting" for a change in a device's status.



17

Example: The given screenshot shows an example of a schedule for every day with different times, i.e. If there is no change in a device's status between 6:00 and 9:00, at 9:00 you will receive a notification saying "No event was registered at your Safe@Home system!" If there was a change in a device's status in this time interval, you will not receive any notification.



# Triple+

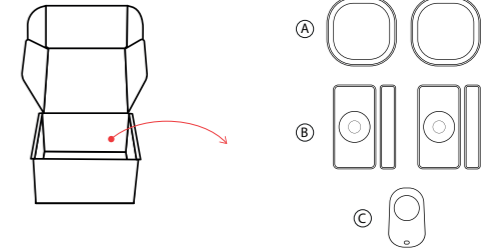
Triple+ Canada Inc.  
375-700 Lawrence Ave. West Toronto, ON M6A 3B4 Canada

For more support information visit our website at:  
[www.tripleplus.io](http://www.tripleplus.io)



Thank you for purchasing the Triple+ SAFE@HOME. Please follow the steps shown in this guide to properly install your new smart system.

## IN THE KIT



- A) 2 X Motion Sensor
- B) 2 X Magnetic Sensor
- C) 1 X Panic Button
- D) 1 X HUB
- E) 2 X Backup Batteries
- F) 1 X Power Adapter

