

## Triple+ CLM™ HUB V1.0 Installer Guide v3.0

P/N: CLM-COAMAP-1-02, CLM-COEMEA-1-00

### ◆ Welcome

Thank you for choosing Triple+ CLM™.

Triple+ CLM™ is the ultimate Water Leak Damage Prevention cloud-based system. The system is managed via an App and is designed to prevent damage due to water leak. Triple+ offers you a total peace of mind when you are in or away.

### ◆ Please note

Please read these instructions carefully and follow the system's installation and commissioning steps.

Maintain this document in a safe place for future reference. Contact your authorized installer with any questions.

**⚠ Warning!** This product was designed to prevent water leak damages and should be used for this purpose only.

### ◆ Triple+ CLM™ system

Triple+ CLM™ line of products includes innovative battery-operated devices which enables the automated control of water valves. This is unified under the "Smart Home" umbrella. The Triple+ CLM™ HUB serves as a Gateway that ensures a secured communication between the system devices, Triple+ cloud and App.

Triple+ CLM™ integrates easily into the Smart Home IoT ecosystem, providing a unique cloud-based secured platform for Water Leak Management.

### ◆ Triple+ CLM™ HUB technical specification:

Part No.	CLM-COAMAP-1-02, CLM-COEMEA-1-00
Product description	The secured and reliable Triple+ CLM™ HUB communicates with the connected devices and the Triple+ Cloud.
Dimensions	25x68x131mm (1x2.68x5.16")
Weight	155gr (5.28 Oz)
Power supply	External Adaptor Input 110-240 V AC
Operation voltage	5V (2 x AA backup batteries. Up to 8 hours)
Operating RF	868/915 MHz
Transmission range	Open space - up to 230 m (750 ft.) Indoor - up to 120 m (390 ft.) Avoid installing in a metal cabinet.
Working Temperature	-20 to +50°C (-4 to +122°F)
Certifications	FCC ID: 2AFOIHUB IC: 20798

### ◆ HUB description

- A. Power outlet
- B. Table stand
- C. Lower cover
- D. HUB
- E. USB connector (Optional)
- F. RGB LED indicator
- G. Wall mounting bracket (rear part)



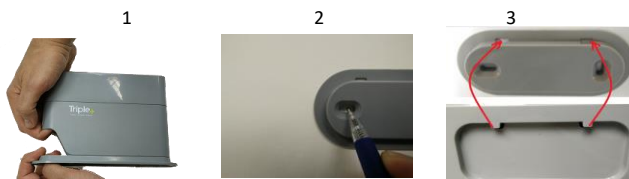
### ◆ Batteries Installation

1. Slide down the lower cover
2. Insert 2 x AA batteries (included)
3. Slide back up the lower cover



### ◆ HUB Wall installation

1. Detach the HUB from the table stand as shown here below
2. Attach the wall mounting bracket to its location and mark the holes for the mounting screws
3. Place the HUB's rear mounting pins close to the wall and gently slide down the wall mount dimples



**⚠ Warning!** Do not attempt to rotate the HUB on the mounting to avoid physical damage to the enclosure.

### ◆ HUB Table installation

For table use, connect the table stand to the HUB and place it on the table.



### ◆ HUB LED behavior

- GREEN flashes every 2 Sec – OK
- BLUE flashes every 2 Sec – Failure in communication with the Triple+ Cloud or with any system's device
- RED flashes every 2 Sec – battery status warning / low battery, in Hub or one of the devices.

### ◆ System Component synchronization and activation

Triple+ CLM™ devices are installed and activated using the Triple+ CLM™ installer's or End-User APP available on AppStore and Google Play.

This Hub is designed for indoor use only and should be installed by an authorized installer.

### ◆ Warranty instructions

Please visit [www.tripleplus.io/support](http://www.tripleplus.io/support) for warranty, technical support, terms and conditions or troubleshooting.